

**PATTERN FEATURES:**

Version #1 Mitered neckband. It also features a curved hem and narrow, long sleeves.

Version #2 Mitered neckband. It also features a curved hem and banded, short sleeves.

Version #3 Mitered neckband. It also features a cropped, straight hem and is sleeveless.

Version #4 Semi-deep V-neck with a lapped neckband. It also features a split hem with vented sides and narrow, long sleeves. It works best with sweater knits that do not have too much structure or stretch recovery.

Version #5 Semi-deep V-neck with a lapped neckband. It also features a cropped, straight hem and is sleeveless. It works best with sweater knits that do not have too much stretch recovery.

**FABRICS:**

Versions #1-3 are designed for lightweight, fluid knit fabrics with at least 25% stretch such as rayon, bamboo, and soy jerseys. Choose cotton, linen and hemp jerseys for a slightly boxy fit.

Versions #4-5 are designed for sweater knit fabrics with at least 25% stretch. Choose natural fiber sweater knits such as wool jersey, novelty sweater knits and softer rib knits.

SIZES: 00-20

**STANDARD FIT BODY MEASUREMENTS**

SIZE	00	0	2	4	6	8	10	12	14	16	18	20
BUST inches	31	32	33	34	35	36	37 1/2	39	41	43	45	47
BUST cm	79	81	84	86	89	91	95	99	104	109	114	119
WAIST inches	23 1/2	24 1/2	25 1/2	26 1/2	27 1/2	28 1/2	30	31 1/2	33 1/2	35 1/2	37 1/2	39 1/2
WAIST cm	60	62	65	67	70	72	76	80	85	90	95	100
HIP inches	34	35	36	37	38	39	40 1/2	42	44	46	48	50
HIP cm	86	89	91	94	97	99	103	107	112	117	122	127

**FINISHED GARMENT MEASUREMENTS**

SIZE	00	0	2	4	6	8	10	12	14	16	18	20
BUST (all versions inches)	40	41	42	43	44	45	46 1/2	48	50	52	54	56
cm	102	104	107	109	112	114	118	122	127	132	137	142
V#1 & 2 Length inches	24 1/8	24 1/2	24 5/8	25 1/4	25 5/8	26	26 3/8	26 3/4	27 1/8	27 1/2	27 7/8	28 1/4
high shldr to hem cm	61	62	63	64	65	66	67	68	69	70	71	72
V#3 & 5 Length inches	20 1/2	20 7/8	21 1/4	21 5/8	22	22 3/8	22 3/4	23 1/8	23 1/2	23 7/8	24 1/4	24 5/8
high shldr to hem cm	52	53	54	55	56	57	58	59	60	61	62	63
V#4 Length inches	24 3/4	25 3/8	25 3/4	26 1/8	26 1/2	26 7/8	27 1/4	27 5/8	28	28 3/8	28 3/4	29 1/8
high shldr to hem cm	63	64	65	66	67	68	69	70	71	72	73	74
V#1 & 4 Slv length inches	28	28 1/4	28 1/2	28 3/4	29	29 1/4	29 1/2	29 3/4	30 1/8	30 1/2	30 7/8	31 1/4
CB neck to hem cm	71	72	72	73	74	74	75	76	77	78	79	79
V#2 Sleeve length inches	14 1/8	14 3/8	14 5/8	14 7/8	15 1/8	15 3/8	15 3/4	16 1/8	16 1/2	17	17 1/2	18
CB neck to hem cm	36	37	37	38	39	40	41	42	43	44	45	46
Bottom opening inches	40	41	42	43	44	45	46 1/2	48	50	52	54	56
all versions cm	102	104	107	109	112	114	118	122	127	132	137	142



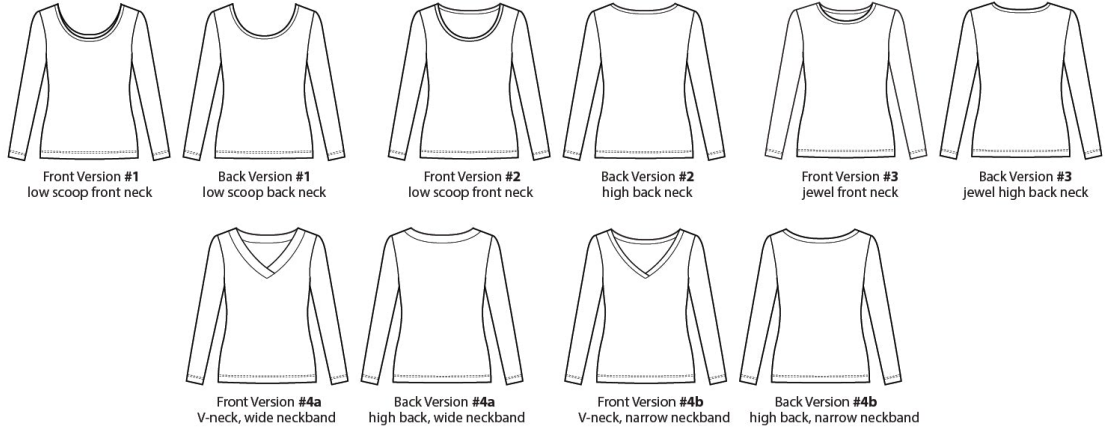
**FABRIC REQUIREMENTS**

★ Allow extra fabric if matching stripes, plaids or using border prints.

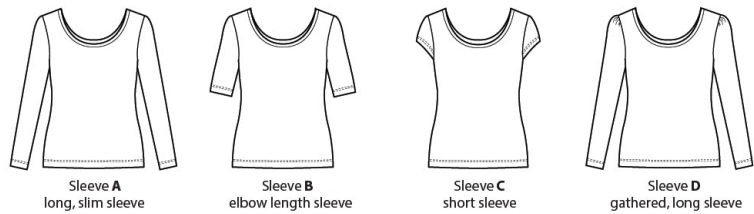


	SIZE	00 - 6	8	10 - 16	18 - 20
<b>Version#1, long sleeve tee</b>	54" - 60" wide fabric yards	1 3/8	2 1/4	2 1/4	2 1/4
	137 - 152 cm wide fabric meters	1.3	2	2	2
<b>Version#2, short sleeve tee</b>	54" - 60" wide fabric yards	1	2	2	2 1/8
	137 - 152 cm wide fabric meters	1	1.8	2	2
<b>Version#3, sleeveless tee</b>	54" - 60" wide fabric yards	7/8	7/8	1 1/2	1 5/8
	137 - 152 cm wide fabric meters	.8	.8	1.4	1.5
<b>Version#4, long sleeve sweater</b>	54" - 60" wide fabric yards	1 3/8	1 3/8	2	2
	137 - 152 cm wide fabric meters	1.3	1.3	1.8	1.8
<b>Version#5, sleeveless sweater</b>	54" - 60" wide fabric yards	7/8	7/8	1 5/8	1 5/8
	137 - 152 cm wide fabric meters	.8	.8	1.5	1.5
<b>Interfacing (all versions and sizes) 2" X 22" or 5cm X 56cm</b>					

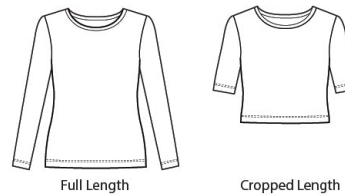
**NECKLINES**



**SLEEVES**



**LENGTHS**

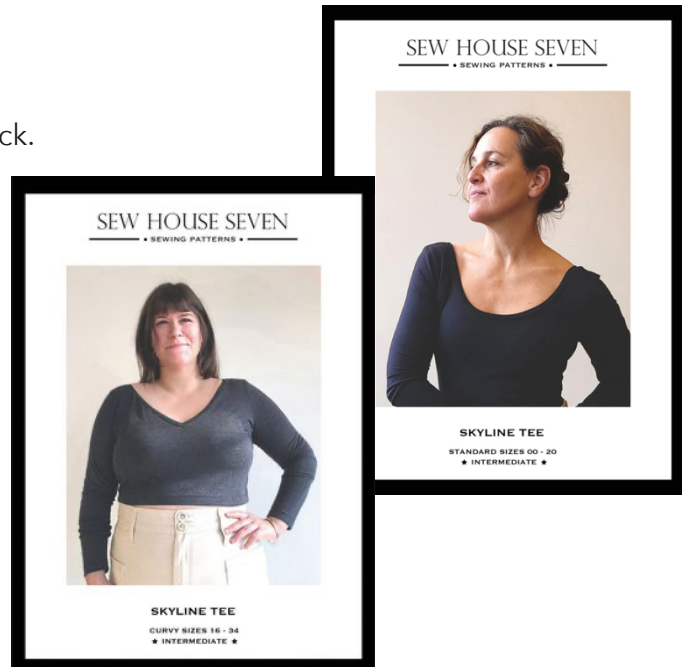


**OPTIONS:**

- Version #1 - low scoop front and back necklines
- Version #2 - low scoop front neck with high back neck.
- Version #3 - jewel neck.
- Version #4 - V-neck with a wide neckband (4a) or a low, narrow neckband (4b).
- Sleeve A - slim, long sleeve.
- Sleeve B - above the elbow short sleeve.
- Sleeve C - short, cap sleeve.
- Sleeve D - gathered shoulder cap, long sleeve.
- Hem - Full or cropped.

**SIZES:**

Standard 00-20 & Curvy 16-34



SKYLINE TEE FABRICS: This pattern is designed for light to medium weight 4-way stretch knit fabrics with at least 50% horizontal and vertical stretch such as cotton stretch jersey, bamboo stretch jersey, stretch baby French terry, stretch thermal knit, stretch rib knit, stretch pointelle knit. Good stretch recovery is advised so that neckbands don't stretch out, however, too much stretch recovery may result in a tighter fitting t-shirt.

### STANDARD BODY MEASUREMENTS

★ We suggest choosing your size based primarily on your high bust measurement.

SIZE		00	0	2	4	6	8	10	12	14	16	18	20
HIGH BUST	inches	29	30	31	32	33	34	35 1/2	37	39	41	43	45
	cm	74	76	79	81	84	86	90	94	99	104	109	114
BUST	inches	31	32	33	34	35	36	37 1/2	39	41	43	45	47
	cm	79	81	84	86	89	91	95	99	104	109	114	119
WAIST	inches	23 1/2	24 1/2	25 1/2	26 1/2	27 1/2	28 1/2	30	31 1/2	33 1/2	35 1/2	37 1/2	39 1/2
	cm	60	62	65	67	70	72	76	80	85	90	95	100
HIGH HIP	inches	30	31	32	33	34	35	36 1/2	38	40	42	44	46
	cm	76	79	81	84	86	89	93	97	102	107	112	117

### FINISHED GARMENT MEASUREMENTS

★ These finished measurements should be smaller than your actual body measurements. These garments have negative ease and are meant for 4-way stretch knit fabrics.

SIZE		00	0	2	4	6	8	10	12	14	16	18	20
BUST	inches	26 1/2	27 1/2	28 1/2	29 1/2	30 1/2	31 1/2	33	34 1/2	36 1/2	38 1/2	40 1/2	42 1/2
	3" below underarm cm	67	70	72	75	77.5	80	84	87.5	92.5	98	103	108
FULL BODY LENGTH	inches	21 1/2	21 3/4	22	22 1/4	22 1/2	22 3/4	23	23 1/4	23 1/2	23 3/4	24	24 1/4
	high shoulder to hem cm	54.5	55	56	56.5	57	58	58.5	59	59.5	60	61	61.5
CROP BODY LENGTH	inches	17	17 1/4	17 1/2	17 3/4	18	18 1/4	18 1/2	18 3/4	19	19 1/4	19 1/2	19 3/4
	high shoulder to hem cm	43	44	44.5	45	45.5	46	47	47.5	48	49	49.5	50
BOTTOM OPENING	inches	29	30	31	32	33	34	35 1/2	37	39	41	43	45
	full length cm	74	76	79	81	84	86	90	94	99	104	109	114
BOTTOM OPENING	inches	25	26	27	28	29	30	31 1/2	33	35	37	39	41
	cropped length cm	64	66	69	71	74	76	80	84	89	94	99	104
SLEEVES A & D	inches	17 3/8	17 1/2	17 5/8	17 3/4	17 7/8	18	18 1/8	18 1/4	18 3/8	18 1/2	18 5/8	18 3/4
	underarm to hem cm	44	44.5	44.75	45	45.5	45.75	46	46.25	46.5	47	47.25	47.5
SLEEVE B	inches	6 1/8	6 1/8	6 1/4	6 1/4	6 3/8	6 3/8	6 1/2	6 1/2	6 5/8	6 5/8	6 3/4	6 3/4
	underarm to hem cm	15.5	15.5	16	16	16	16	16.5	16.5	17	17	17	17
SLEEVE C	inches	3/4	3/4	3/4	3/4	3/4	3/4	3/4	3/4	3/4	3/4	3/4	3/4
	underarm to hem cm	2	2	2	2	2	2	2	2	2	2	2	2

### FABRIC REQUIREMENTS

★ Allow extra fabric if matching stripes, plaids or using border prints.

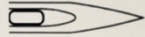
**54" - 60" / 137 - 152 cm wide fabric**

SIZE		00	0 - 2	4 - 8	10 - 12	14 - 20
All Views, Full Length - Sleeve A	yards/meters	1 3/8 / 1.25	1 1/2 / 1.4	1 1/2 / 1.4	1 1/2 / 1.4	1 5/8 / 1.5
All Views, Cropped - Sleeve A	yards/meters	1 3/8 / 1.25	1 3/8 / 1.25	1 3/8 / 1.25	1 1/2 / 1.4	1 1/2 / 1.4
All Views, Full Length - Sleeve B	yards/meters	1 1/8 / 1	1 1/8 / 1	1 1/8 / 1	1 1/4 / 1.1	1 1/4 / 1.1
All Views, Cropped - Sleeve B	yards/meters	1 / 0.9	1 / 0.9	1 1/8 / 1	1 1/8 / 1	1 1/4 / 1.1
All Views, Full Length - Sleeve C	yards/meters	1 / 0.9	1 / 0.9	1 / 0.9	1 1/8 / 1	1 1/8 / 1
All Views, Cropped - Sleeve C	yards/meters	7/8 / 0.8	7/8 / 0.8	1 / 0.9	1 / 0.9	1 1/8 / 1
All Views, Full Length - Sleeve D	yards/meters	1 1/2 / 1.4	1 1/2 / 1.4	1 1/2 / 1.4	1 5/8 / 1.5	1 3/4 / 1.6
All Views, Cropped - Sleeve D	yards/meters	1 3/8 / 1.25	1 3/8 / 1.25	1 3/8 / 1.25	1 1/2 / 1.4	1 5/8 / 1.5

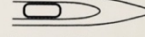
<b>Sewing Tools</b>
Working Sewing Machine
Optional: Serger/Overlocker
Fabric Shears
Seam Ripper
Sewing Gauge
Pins & Pin Holder
Cotton or Silk Organza Press Cloth
Optional: Weights for Cutting Layout
Marking Tool (water soluble, friction, chalk, etc.)
Sewing Machine Needle (Stretch or Jersey depending on fabric fiber content)
Optional: Twin Needle



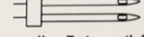
**Stretch** - For knits with two-way stretch particularly those containing Lycra™, rubber in swim wear and lingerie, and for sewing elastic. Use with texturized nylon or polyester thread. Specially designed scarf prevents skipped stitches. Available in sizes: 75/11, 90/14.



**Ball Point** - For cotton knits, interlock rib knits, fleece, double knit, Ultrasuede™, and most other knit fabrics. Use with polyester or lightweight cotton thread (50 wt). Ballpoint tip prevents needle from piercing and breaking fibers. Available in sizes: 70/10, 80/12, 90/14.



**Twin** - For heirloom sewing and decorative top-stitching. Use with cotton, polyester and rayon embroidery thread. Size indicates distance between needles. Twin available in Ballpoint, Universal, Jeans, Embroidery, Metallic and Stretch in a variety of sizes. Twin needles are fixed in a nylon block and should be used at slower speeds and not for prolonged periods.



<b>Notions:</b>
Optional: 45" Pattern-Ease Tracing Material (yardage = 2-3 yds.)
All Purpose Thread: Mettler polyester
Interfacing: "Sewkeys" Stay Tape 1" for straight hems, 1/2" for curved hems



Additional KNIT TOP Patterns available at Montavilla Sewing Centers:

