

SEW HOUSE SEVEN

• SEWING PATTERNS •



VERSION #1



VERSION #2

110 THE TOASTER SWEATERS

SIZES XS - XXL BEGINNER

SEW HOUSE SEVEN

• SEWING PATTERNS •



TOASTER SWEATERS

CURVY SIZES 16 - 34

★ KNITS - BEGINNER LEVEL ★

#110 TOASTER SWEATERS

Description:

VERSION #1 - A high neck (loose T), raglan sleeve cropped sweater with a wide waistband and wide cuffs.

VERSION #2 - A semi-high neck sweater with a self faced mini funnel neck. It is fitted through the shoulders and sleeves and fuller through the body. It features a hi-low hem with side vents (the back hem is 1" lower than the front hem).



#toastersweaters, #toastersweater1, #toastersweater2

★ Visit www.sewhouse7.com

RECOMMENDED FABRICS:

Mid to heavy weight stretch fabrics with at least 20% horizontal stretch such as...**VERSION #1** - Stretch sweatshirt fleece, stretch French terry, knit boiled wool, ponte, scuba

VERSION #2 - Stretch sweatshirt fleece, stretch French terry, wool jersey, thick cotton interlock or jersey knit, stretch woven wool, ponte.

SUNDRIES:

Thread.
Optional for **VERSION #2** - Double sided fusible knit tape for the neck & hem.

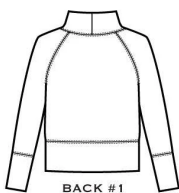
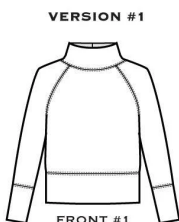
TOOLS:

Fabric scissors, iron & ironing board, straight pins, tailors chalk, ball point sewing machine needle for knits, twin or double needle for knits is optional for topstitching.

"Sewkeys" Knit Stay Tape available @ Montavilla Sewing Centers

STANDARD FIT BODY MEASUREMENTS

SIZE	00	0	2	4	6	8	10	12	14	16	18	20
HIGH BUST in	29	30	31	32	33	34	35 1/2	37	39	41	43	45
HIGH BUST cm	74	76	79	81	84	86	90	94	99	104	109	114
BUST inches	31	32	33	34	35	36	37 1/2	39	41	43	45	47
BUST cm	79	81	84	86	89	91	95	99	104	109	114	119
WAIST inches	23 1/2	24 1/2	25 1/2	26 1/2	27 1/2	28 1/2	30	31 1/2	33 1/2	35 1/2	37 1/2	39 1/2
WAIST cm	60	62	65	67	70	72	76	80	85	90	95	100
HIP inches	34	35	36	37	38	39	40 1/2	42	44	46	48	50
HIP cm	86	89	91	94	97	99	103	107	112	117	122	127



FINISHED GARMENT MEASUREMENTS

SIZE	00	0	2	4	6	8	10	12	14	16	18	20	
BUST	inches	34	35	36	37	38	39	40 1/2	42	44	46	48	50
	cm	86	89	91	94	97	99	103	107	112	117	122	127
LENGTH	inches	20 5/8	20 7/8	21 1/8	21 3/8	21 5/8	21 7/8	22 1/8	22 3/8	22 5/8	22 7/8	23 1/8	23 3/8
	cm	52	53	53.5	54	55	55.5	56	56.5	57.5	58	58.5	59
BOTTOM OPENING	inches	31 5/8	32 5/8	33 5/8	34 5/8	35 5/8	36 5/8	38 1/8	39 5/8	41 5/8	43 5/8	45 5/8	47 5/8
	cm	80	83	85	88	90	93	97	101	106	111	116	121
SLEEVE LENGTH	inches	25 3/4	26	26 1/4	26 1/2	26 3/4	27	27 1/4	27 1/2	27 3/4	28	28 1/4	28 1/2
	cm	65	66	66.5	67	68	68.5	69	70	70.5	71	71.5	72
BUST	inches	35 1/2	36 1/2	37 1/2	38 1/2	39 1/2	40 1/2	42	43 1/2	45 1/2	47 1/2	49 1/2	51 1/2
	cm	90	93	95	98	100	103	107	111	116	121	126	131
LENGTH	inches	22 1/8	22 3/8	22 5/8	22 7/8	23 1/8	23 3/8	23 5/8	23 7/8	24 1/8	24 3/8	24 5/8	24 7/8
	cm	56	57	57.5	58	58.5	59	60	60.5	61	62	62.5	63
BOTTOM OPENING	inches	40	41	42	43	44	45	46 1/2	48	50	52	54	56
	cm	102	104	107	109	112	114	118	122	127	132	137	142
SLEEVE LENGTH	inches	23 1/8	23 1/4	23 3/8	23 1/2	23 5/8	23 3/4	23 7/8	24	24 1/4	24 1/2	24 3/4	25
	cm	58.5	59	59.5	59.5	60	60.5	60.5	61	61.5	62	62.5	63.5
BICEP	inches	10 1/8	10 1/2	10 7/8	11 1/4	11 5/8	12	12 1/2	13	13 5/8	14 1/4	14 7/8	15 1/2
CIRCUMFERENCE	cm	25.5	26.5	27.5	28.5	29.5	30.5	32	33	34.5	36	38	39.5



FABRIC REQUIREMENTS

★ Allow extra fabric if matching stripes, plaids or using border prints.

SIZE	00	0	2	4	6	8	10	12	14	16	18	20
54" wide fabric	YARDS	1 5/8	1 5/8	1 5/8	1 5/8	1 5/8	1 7/8	1 7/8	1 7/8	1 7/8	2	2
	METERS	1.5	1.5	1.5	1.5	1.5	1.5	1.7	1.7	1.7	1.8	1.8
60" wide fabric	YARDS	1 1/4	1 1/4	1 5/8	1 5/8	1 5/8	1 5/8	1 5/8	1 3/4	1 3/4	1 7/8	1 7/8
	METERS	1.2	1.2	1.5	1.5	1.5	1.5	1.5	1.6	1.6	1.7	1.7
54" wide fabric	YARDS	1 1/2	1 1/2	1 5/8	1 5/8	1 5/8	1 5/8	1 5/8	1 5/8	1 7/8	1 7/8	1 7/8
	METERS	1.4	1.4	1.5	1.5	1.5	1.5	1.5	1.5	1.7	1.7	1.7
60" wide fabric	YARDS	1 1/2	1 1/2	1 5/8	1 5/8	1 5/8	1 5/8	1 5/8	1 5/8	1 7/8	1 7/8	1 7/8
	METERS	1.4	1.4	1.5	1.5	1.5	1.5	1.5	1.5	1.7	1.7	1.7