

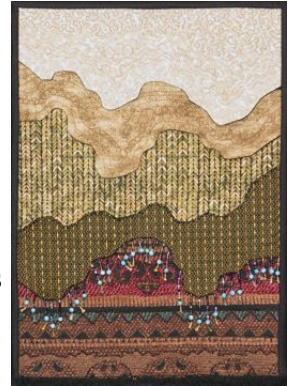
Flaky Layered Faced Applique

Supply List (1 page)

Instructor: Helene Knott 503-888-9784 Email: helene.m.knott@gmail.com

Website: www.heleneknott.com

Faced appliqué is a technique of preparing fabric shapes to appliqué by hand or machine. Not only does the method turn the raw edge under in an easy step, but the results also raise the surface in a wonderful 3-dimensional texture. Create the pieces in staggered layers, and now you add a whole new approach to surface design, like feathers on a bird or overlapping rock strata. Design inspiration is everywhere, and this technique was inspired by a photo of Liquid Crystal magnified under an Electron Microscope. Pre-quilted 'flakes' of faced fabric are staged in overlapping layers, and the layers can be embellished if that is your passion. This project focuses on combining interesting transitions of texture and color. This technique has possibilities beyond quilting and would have a great application in wearable art construction or costuming.



Please be courteous to others by arriving for class with the correct supplies. Contact me at 503-888-9784 or helene.m.knott@gmail.com if you have any questions.

A Note to Students: Many students do not realize that once the teacher is paid, the shop offering a class makes little if any income on the class itself. The shop is relying on product sales to continue offering quality classes to you. Therefore, I urge you to patronize this shop when buying your supplies for this class as much as possible and remind you that big chain stores do not offer the variety of classes that the smaller shops do. Keep quilt classes alive by supporting this shop.

Thank you, Helene

TOOLS/MATERIALS:

- **Fabric:** 5 (or more) pieces of fabric measuring about 10"x 12" in various colors/prints of your choice. You can play with color and value shifts, or transitions of print and texture. For the best results, there should be some value contrast between the colors/layers.
- **Facing fabric:** ½ yard of a stable fabric that coordinates well with your fabric colors. This can be more of each fabric you intend for your layers, or one color to coordinate with all the other fabrics. Flannel can be a good choice as it adds a subtle padding to your layers.
- **Pre-quilted base panel:** This can be a piece of upholstery fabric with no batting stitched wrong-sides together with a piece of flannel, or quilters' cotton layered with very thin batting and backing, and quilted in an all-over stipple or meander. You want stability but not too much bulk; there is no need to finish the edges at this point.
- **Sharp pointed craft scissors:** To cut details and snip seams on the appliqué.
- **Scratch paper:** 8 ½" x 11", if you wish to create your own layered design.
- **Freezer Paper:** a few feet off a roll or a package of freezer paper sheets about the size of standard copy paper
- **A Pencil and a good eraser:** You may end up erasing repeatedly so have a separate eraser handy and a sharpener handy.
- **Black Sharpie® pen**
- **Sewing pins**
- **Thread:** In colors to match or harmonize with your fabrics. You may also want thread in contrasting colors if you wish to embellish with stitching.
- **Sewing Machine:** With a free-motion foot.
- **Embellishments (optional):** You will probably not get to the embellishing stage in class – if you even want to embellish at all – but as some forms of embellishment will have to be done before the layers are assembled, you may want to bring any objects you are thinking of using – hand embroidery threads, beads, sequins, buttons, lace or???