

Supply List: *Custom House Coat*

15% CLASS DISCOUNT: Can be used to purchase pattern, sewing tools and project materials. Lake Oswego Montavilla carries many fabrics appropriate for this Robe.

Sewing Tools
Working Sewing Machine machine manual & attachments
Optional: Serger/Coverstitch
Fabric Shears
Seam Ripper
Press Cloth (cotton or silk)
Sewing gauge
Pins & pin holder
Disappearing Fabric Marker
Sewing Machine Needle appropriate for fabric type



Project Materials
PATTERN: Palmer/Pletsch Kimono Unisex Robe →
Optional: 2 yds. Pattern-Ease Tracing Material
FABRIC: Pre-washed & pressed according to fiber content
Woven: Cotton & Cotton blends, Gauze, Waffle, Flannel, Flannel-backed Satin, Seersucker, Oxford, Chambray, Linen, Chenille, Terry Cloth, etc.
Knit Fabrics: Sherpa, Anti-pill Fleece, Minky, Velour, Jersey, Sweatshirt, French Terry, etc.
Blue Robe (size medium, medium length) is made out of Cotton Sherpa from Lake Oswego Montavilla. Sherpa side out on band, pocket & belt. Pictured on page 2.
Elmo Robe (size extra small, short length) is made out of Polyester Anti-Pill Fleece. Pictured above.
ALL-PURPOSE THREAD: Mettler polyester
INTERFACING: 1/8 yd or "Sewkeys" 1" Stay Tape →



Links to information on types of fabric for making a Robe and characteristics of fiber content.

Robe Mart Fabric Guide: <https://robemart.com/blog/fabric-types-robe/>

Seyante Fabric Types: <https://seyante.com/blogs/news/best-bathrobe-material-fabric-types>



Custom House Coat

Copyright © 2002, Palmer/Plesch Publishing, 1801 NW Upshur, Portland, OR 97209, All rights reserved. Printed in U.S.A. Trademarks Reg. U.S. Pat. & TM Off. Marca Registrada

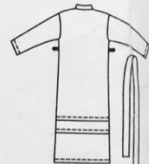
002 Classic Kimono Robe & Pajamas

TEENS', MISSES', AND MEN'S ROBE: 5 sizes. Robe has tie belt, front band and pockets.
TEENS', MISSES', AND MEN'S TOP, PULL-ON PANTS OR SHORTS: 3 sizes.
 Loose fitting top has collar, button front and patch pocket; pull-on pants have elastic waist.

SUGGESTED FABRICS: Robe- Cotton and cotton blends, cotton flannel, seersucker, oxford cloth, chambray, light weight Polar Fleece®, velour. Pajamas- Cotton and cotton blends, cotton flannel, chambray, broadcloth.

BODY MEASUREMENTS: Robe, Pajamas Inches (cm)					
Sizes:	XS/X-Small	S/Small	M/Medium	L/Large	XL/X-Large
Bust/Chest:	29½-30½"	31½-32½"	34-36"	38-40"	42-44"
	75-78cm	80-83cm	87-92cm	97-102cm	107-112cm
Hips:	31½-32½"	33½-34½"	36-38"	40-42"	44-46"
	80-83cm	85-88cm	92-97cm	102-107cm	112-117cm

*****With or Without Nap:**
 Use With Nap Yardages and layouts for pile or one-way design fabrics. Additional Fabric may be needed to match stripes or plaids.



ROBE YARDAGE: Long Yards (m)					
45" ***	4½ (4.20)	4½ (4.20)	4½ (4.20)	4¾ (4.30)	4¾ (4.40)
60" ***	4¼ (3.80)	4¼ (3.80)	4¼ (3.90)	4¾ (3.90)	4¾ (3.90)

NOTIONS: Thread. Robe-Pocket Interfacing ½ yd. (11.5cm)
 Pajama Top-Four ¾" (19mm) Buttons; Interfacing 1 yd. (.90m)
 Pajama Pants or Shorts-1½ yds. (1.30m) of ¾" (2cm) Wide Elastic;



CONTRAST BAND YARDAGE: Long Yards (m)					
45 thru 60" ***	1½ (1.80)	1½ (1.80)	1½ (1.80)	2 (1.90)	2 (1.90)

ROBE YARDAGE: Medium Yards (m)					
45" ***	4 (3.70)	4 (3.70)	4½ (3.80)	4½ (3.80)	4¾ (3.90)
60" ***	3½ (3.30)	3½ (3.30)	3¾ (3.40)	3¾ (3.40)	3¾ (3.60)

CONTRAST BAND YARDAGE: Medium Yards (m)					
45 thru 60" ***	1½ (1.40)	1½ (1.50)	1½ (1.50)	1½ (1.50)	1½ (1.50)

ROBE YARDAGE: Short Yards (m)					
45" ***	3½ (3.20)	3½ (3.30)	3¾ (3.40)	3¾ (3.40)	3¾ (3.40)
60" ***	3½ (2.80)	3½ (2.90)	3¾ (3.10)	3¾ (3.10)	3¾ (3.10)

CONTRAST BAND YARDAGE: Short Yards (m)					
45 thru 60" ***	1½ (1.30)	1½ (1.30)	1½ (1.30)	1½ (1.40)	1½ (1.40)

ROBE YARDAGE: Long Yards (m)					
45" ***	4¾ (4.30)	4¾ (4.30)	4¾ (4.30)	4¾ (4.30)	5½ (5.10)
60" ***	4¾ (3.80)	4¾ (3.80)	4¾ (3.90)	4¾ (3.90)	4¾ (3.90)

ROBE YARDAGE: Medium Yards (m)					
45" ***	4¾ (3.80)	4¾ (3.80)	4¾ (3.80)	4½ (3.90)	4¾ (3.90)
60" ***	3¾ (3.30)	3¾ (3.30)	3¾ (3.40)	3¾ (3.50)	3¾ (3.60)

ROBE YARDAGE: Short Yards (m)					
45" ***	3¾ (3.40)	3¾ (3.40)	3¾ (3.40)	3¾ (3.40)	3¾ (3.40)
60" ***	3¾ (2.90)	3¾ (3.00)	3¾ (3.10)	3¾ (3.10)	3¾ (3.10)

PAJAMA TOP YARDAGE: Short Sleeve Yards (m)					
45" ***	2½ (2.40)	2½ (2.50)	2½ (2.60)	2½ (2.60)	2½ (2.60)
60" ***	2½ (2.00)	2½ (2.00)	2½ (2.00)	2½ (2.00)	2½ (2.00)

PAJAMA TOP YARDAGE: Long Sleeve Yards (m)					
45" ***	3¾ (3.10)	3¾ (3.10)	3¾ (3.10)	3¾ (3.10)	3¾ (3.10)
60" ***	2¾ (2.40)	2¾ (2.40)	2¾ (2.40)	2¾ (2.40)	2¾ (2.40)

PAJAMA PANTS YARDAGE: Yards (m)					
45" ***	2½ (2.40)	2½ (2.50)	2½ (2.50)	2½ (2.50)	2½ (2.50)
60" ***	2½ (2.0)	2½ (2.10)	2½ (2.10)	2½ (2.10)	2½ (2.10)

PAJAMA SHORTS YARDAGE: Yards (m)					
45" ***	1½ (1.10)	1½ (1.20)	1½ (1.20)	1½ (1.20)	1½ (1.20)
60" ***	1 (0.90)	1 (0.90)	1 (0.90)	1 (0.90)	1 (0.90)

FINISHED GARMENT MEASUREMENTS: Inch (cm)

ROBE	XS	S	M	L	XL
Measurement at bust/chestline					
Long	42½(108)	46(117)	49½(126)	53½(136)	57½(146)
Measurement at hipline					
Long	44½(113)	48(122)	51½(131)	55½(141)	59½(151)
Back length from normal neckline					
Misses' Long	55¼(142)	56¼(143)	56¼(144)	57¼(145)	57¼(147)
Men's Long	58¼(149)	59¼(150)	59¼(152)	60¼(153)	60¼(154)
Misses' Med.	43¼(111)	44¼(113)	44¼(114)	45¼(116)	45¼(116)
Men's Med.	46¼(119)	47¼(120)	47¼(121)	48¼(123)	48¼(124)
Misses' Short	37¼(96)	38¼(97)	38¼(98)	39¼(100)	39¼(101)
Men's Short	40¼(104)	41¼(105)	41¼(106)	42¼(107)	42¼(108)

FINISHED GARMENT MEASUREMENTS: Inches (cm)

PAJAMAS	S	M	L
Measurement at bust/chestline			
Top	48½ (123)	52½ (133)	56½ (144)
Measurement at hipline			
Top	47½ (121)	51½ (131)	55½ (141)
Pants/Shorts	45 (114)	49 (124)	53 (135)
Back length from normal neckline			
Top	29½ (75)	30 (76)	30½ (77)
Side length from natural waistline			
Pants	42½ (108)	43 (109)	43½ (111)
Width, each leg			
Pants	18 (46)	19 (48)	20 (51)