

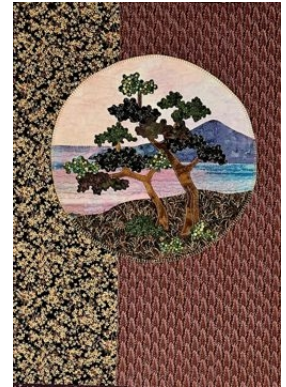
# Landscape Elements ~ Collage Trees

## Supply list

Instructor: Helene Knott 503 888-9784 Email: [helene.m.knott@gmail.com](mailto:helene.m.knott@gmail.com)

Website: [www.heleneknott.com](http://www.heleneknott.com)

One delightful aspect of creating scenic landscape quilts is the variety of techniques that can be employed to create exquisite details; this makes landscape quilts fun to make. In this class we will explore one such technique – the craft of making lovely foliage on trees and shrubbery by collage. The method is liberating, and creates trees far more textural and with more depth than simple outlined trees, and it uses up small scraps. If you are not a scrap saver, no worries, I will bring lots of foliage scraps to share. Each student will receive two patterns to choose from to make in class (patterns included in the class)



**Please be courteous to others by arriving for class with the correct supplies. Contact me at 503 888-9784 or [helene.m.knott@gmail.com](mailto:helene.m.knott@gmail.com) if you have any questions.**

**A Note to Students:** Many students do not realize that once the teacher is paid, the shop offering a class makes little if any income on the class itself. The shop is relying on product sales to continue offering quality classes to you. Therefore, I urge you to patronize this shop when buying your supplies for this class as much as possible and remind you that big chain stores do not offer the variety of classes that the smaller shops do. Keep quilt classes alive by supporting this shop.

Thank you, Helene

## Tools/materials:

- **Fabrics:** You will need a variety of fabrics for the landscape features; the backdrop for the tree consists of only a few fabrics but careful selection of colors and textures will enhance your finished quilt. Visit <http://heleneknott.com/pdf/01.pdf> for a free downloadable landscape fabric selection guide. Fat quarters or fat eighths (11" x 18") of each fabric will be sufficient for each feature. **Prewash your fabric; adhesives do not adhere well to sizing.**
  1. **Sky**
  2. **Background hills**
  3. **Water:** 1-3 fabrics that coordinate well with each other would be ideal
  4. **Foreground:** 1-2 prints reminiscent of a meadow and/or rocky shoreline
  5. **Tree Trunks**
  6. **Foliage for Tree:** A variety of scraps ranging from 2" – 4"; blacks, olives, and various dark to light greens.
- **Sewing machine:** With ¼" piecing foot.
- **Sewing thread:** in neutral color
- **Sewing pins**
- **Fusible web:** A product that has one layer of paper is recommended however any fusible product that utilizes a paper base may be used. Avoid products that are simply the adhesive web without a paper base as they will be harder to mark, cut and position accurately. Remember to bring the instructions, fusing; procedures vary between products. ½ yard off a roll should be enough. A product designated as 'lite' will yield softer results.
- **Teflon pressing sheet:** Optional – it is possible to compose your tree on a Teflon® sheet so you can peel it up and fuse the finished creation to the background panel.
- **Scissors:** Remember you will be cutting through paper and fusible webbing adhered to fabric so bring a pair of scissors you don't mind using for these products. Make sure they are sharp and fine-jawed enough to cut out fine detail. A pair of craft scissors would be perfect.
- **Pencil**
- **Rotary cutter, mat and cutting ruler**

