

Bella Vista – Mini Landscapes

Supply list (7 pages)

Instructor: Helene Knott 503-888-9784 Email: helene.m.knott@gmail.com

Website: www.heleneknott.com

This class is a great introduction to landscape quilts and is perfect for those interested in exploring landscape quilts but not ready to tackle a large, complex project. These scenic quilts are small, simplified, and fused, resulting in instant gratification. The mini quilts go together quickly and will be finished with borders to make a small wall hanging measuring approximately 10" x 12" (smaller pattern) or 14" x 20" (larger pattern). The class will introduce you to working with fabrics creatively to make stunning pictorial quilts. There are 9 patterns to choose from, and each includes both sizes. The class fee includes a pattern of choice; students can purchase additional patterns if desired. A few of the scenes are available as kits. To see more design options and fabric legends for each, or reserve a kit, contact the instructor.

Please be courteous to others by arriving for class with the correct supplies. Contact me at 503-888-9784 if you have any questions.

A Note to Students: Many students do not realize that once the teacher is paid, the shop offering a class makes little if any income on the class itself. The shop is relying on product sales to continue offering quality classes to you. Therefore, I urge you to patronize this shop when buying your supplies for this class as much as possible and remind you that big chain stores do not offer the variety of classes that the smaller shops do. Keep quilt classes alive by supporting this shop.

Thank you, Helene

Tools/materials:

- **Fabrics:** Selection and amounts will vary according to the pattern chosen. Fat quarters of each fabric should be more than enough though even scraps will be sufficient for most. The selection of patterns include some that utilize water, sky, rocks, meadows trees and reeds so search for fabrics that can represent these. It's a good idea to have several choices for each element. For suggestions on the types of fabrics you might use, go to <https://heleneknott.com/wp-content/uploads/2024/09/LandscapeFabrics.pdf> for my free downloadable fabric selection guide. Most fusible products adhere better to fabrics without sizing, so it's advisable to pre-wash your fabrics for the best adhesion. You may want to bring a variety of options for borders as well, a Fat Quarter of each will suffice.
- **Muslin, Pattern Ease®, or similar medium-weight interfacing:** Each quilt will be fused to a base. You will need a piece about 12" x 18" of either product for each scenic quilt.
- **Sewing machine:** With a standard piecing foot and possibly a free-motion quilting foot if you get to the stage of layering and quilting your project.
- **Rotary cutter, mat and cutting ruler (optional):** A ruler and mat for squaring and trimming finished panel and/or cutting borders.
- **Fusible web:** A product that has one layer of paper is recommended however any fusible product that utilizes a paper base may be used. Avoid products that are simply the adhesive web without a paper base as they will be harder to mark, cut and position accurately. Remember to bring the instructions, fusing procedures vary between products. NOTE: a product labeled 'Lite' will give you softer results than the regular adhesives.
- **Teflon pressing sheet:** To protect the iron and ironing board from adhesive
- **Light box:** To reverse and trace your pattern for fusing.

Bella Vista – Mini Landscapes

Supply list (7 pages)

Instructor: Helene Knott 503-888-9784 Email: helene.m.knott@gmail.com

Website: www.heleneknott.com

- **Craft or Embroidery Scissors:** You will be cutting through paper and fusible web adhered to fabric so bring a pair of scissors you don't mind using for these products. Make sure they are sharp and fine-jawed enough to cut out fine detail.
- **Pencil and a good eraser**
- **Pigma pen:** to trace the patterns on muslin if desired for a registration guide.
- **Thread:** The only sewing you will probably do in class is attaching the borders so thread in a neutral color will be fine. If you think you may get to the layering and quilting stage, bring an assortment of threads to match your chosen fabrics or invisible thread.
- **Backing and batting (optional):** You may or may not get the project ready to layer and quilt but you may want to bring these just in case. A fat quarter of each will be sufficient
- **Pattern:** There are 9 patterns to choose from. One pattern of choice is included in the class, but students may purchase additional patterns if they wish.
- **Kits:** An optional kit is available for the smaller version of some of the scenes. Kits cost \$25 (payable to the instructor) and include the muslin base and the fabrics needed for the scenic panel. Each kit features a unique composition of fabrics to create day scenes, sunsets, night scenes, etc. Contact the instructor if you are interested in a kit.



Bella Vista Pattern options: Fabric needed:

Bella Vista – Mini Landscapes

Supply list (7 pages)

Instructor: Helene Knott 503-888-9784 Email: helene.m.knott@gmail.com

Website: www.heleneknott.com

Measurements given are width x height to allow for proper orientation of directional prints. For a guide in selecting landscape fabrics, visit <https://heleneknott.com/wp-content/uploads/2024/09/LandscapeFabrics.pdf> Optional fabric kits are available for the 7" x 10" sizes of Rocky Coast, Mt. Hood, Alpine Lake and Serene Marsh at \$25 each (includes pattern), patterns alone are \$10 each. Kits are for the center panel only and do not include borders, each one is unique and fabrics will vary from those shown in photos.

Bella Vista – Mt. Hood (fabric kit available)



Center Panel	7" x 10"	10" x 14"
Muslin	9" x 12"	12" x 16"
Sky	9" x 12"	12" x 7"
Mountain	8" x 5"	10" x 5"
Snow	7" x 3"	9" x 4"
Ridge A	7" x 5"	9" x 6"
Water A	5" x 3"	8" x 4"
Ridge B	6" x 7"	8" x 9"
Water B	7" x 3"	10" X 4"
Water C	6" x 3"	8" x 4"
Trees	5" x 7"	7" x 10"
Inner Border	1/8 yard	1/8 yard
Outer Border	1/8 yard	1/4 yard

Bella Vista – Rocky Coast (fabric kit available)



Center Panel	7" x 10"	10" x 14"
Muslin	9" x 12"	12" x 16"
Sky	9" x 5"	12" x 7"
Cliff A	7" x 4"	9" x 6"
Water A	7" x 4"	9" x 5"
Cliff B	8" x 6"	10" x 8"
Water B	6" x 5"	8" x 6"
Cliff C	7" square	9" square
Rock	2" square	3" square
Water C (or sand)	6" x 4"	10" X 4"
Trees	8" square	10" square
Inner Border	1/8 yard	1/8 yard
Outer Border	1/8 yard	1/4 yard

Bella Vista – Mini Landscapes

Supply list (7 pages)

Instructor: Helene Knott 503-888-9784 Email: helene.m.knott@gmail.com

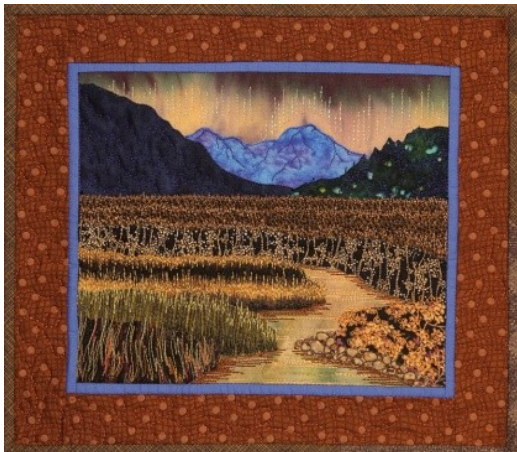
Website: www.heleneknott.com

Bella Vista – River View



Center Panel	10" x 7"	14" x 10"
Muslin	12" x 9"	16" x 12"
Sky	12" x 4"	16" x 5"
Mountain	7" x 4"	9" x 5"
Hill A	5" x 4"	7" x 5"
Hill B	8" x 4"	11" x 6"
Trees	12" x 5"	16" x 7"
Bushes	8" x 3"	11" x 4"
Water A	12" x 2"	16" x 3"
Water B	7" x 3"	10" x 4"
Reeds	7" x 4"	9" x 5"
Inner Border	1/8 yard	1/8 yard
Outer Border	1/8 yard	1/4 yard

Bella Vista – Yellowstone Valley



Center Panel	10" x 7"	14" x 10"
Muslin	12" x 9"	16" x 12"
Sky	12" x 4"	16" x 5"
Mountain	7" x 4"	9" x 4"
Hill A	8" x 5"	10" x 6"
Hill B	7" x 4"	8" x 5"
Prairie	12" x 4"	16" x 4"
River	9" x 5"	11" x 6"
Grass A	12" x 4"	16" x 5"
Grass B	9" x 4"	11" x 4"
Grass C1 & C2	8" x 6"	10" x 7"
Pebbles	6" x 4"	8" x 5"
Grass D	6" x 4"	8" x 5"
Inner Border	1/8 yard	1/8 yard
Outer Border	1/8 yard	1/4 yard

Bella Vista – Mini Landscapes

Supply list (7 pages)

Instructor: Helene Knott 503-888-9784 Email: helene.m.knott@gmail.com

Website: www.heleneknott.com

Bella Vista – Serene Marsh (fabric kit available)



Center Panel	10" x 7"	14" x 10"
Muslin	12" x 9"	16" x 12"
Sky	12" x 4"	16" x 5"
Trees	12" x 4"	16" x 4"
Water A	6" x 2 ½"	8" x 2 ½"
Reeds A	8" x 3"	10 ½" x 3"
Water B	9" x 3"	12" x 4"
Reeds B	5" x 3 ½"	6" x 4"
Water C	8" x 4 ½"	10 ½" x 5 ½"
Reeds C	6 ½" x 5"	8 ½" x 6 ½"
Inner Border	⅛ yard	⅛ yard
Outer Border	⅛ yard	¼ yard

Bella Vista – Alpine Lake (fabric kit available)



Center Panel	10" x 7"	14" x 10"
Muslin	12" x 9"	16" x 12"
Sky	12" x 4"	16" x 6"
Mountain	9" x 4"	12" x 5"
Clouds	12" x 4"	16" x 5"
Distant Hills	12" x 3"	16" x 4"
Water	12" x 4"	16" x 6"
Shore A	7" x 4"	9" x 5"
Shore B	12" x 3"	16" x 4"
Trees	8" x 5"	10" x 7"
Inner Border	⅛ yard	⅛ yard
Outer Border	⅛ yard	¼ yard

Bella Vista – Mini Landscapes

Supply list (7 pages)

Instructor: Helene Knott 503-888-9784 Email: helene.m.knott@gmail.com

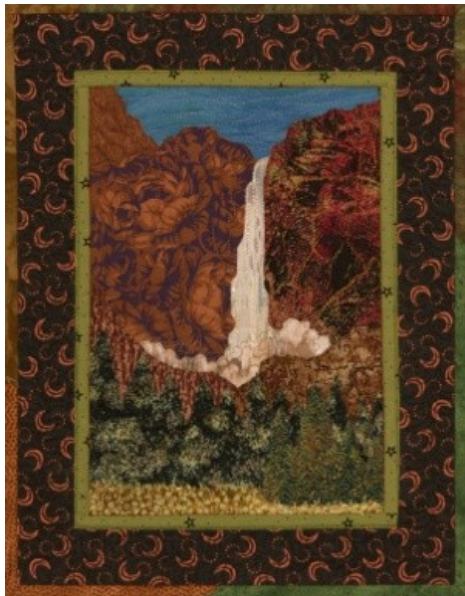
Website: www.heleneknott.com

Bella Vista – Desert Mesa



Center Panel	10" x 7"	14" x 10"
Muslin	12" x 9"	16" x 12"
Sky	12" x 4"	16" x 5"
Distant Hills	6" x 3"	8" x 3"
Desert Plain	12" x 6"	16" x 7"
Rocks A	7" x 5"	9" x 6"
Rocks B	6" x 5"	8" x 6"
Rocks C	10" x 3"	13" x 4"
Rocks D	6" x 5"	8" x 6"
Brush	9" x 3"	11" x 4"
Rocks E	6" x 8"	8" x 11"
Cactus	10" x 8"	11" x 10"
Inner Border	1/8 yard	1/8 yard
Outer Border	1/8 yard	1/4 yard

Bella Vista – Yosemite Falls



Center Panel	7" x 10"	10" x 14"
Muslin	9" x 12"	12" x 16"
Sky	9" x 4"	12" x 4"
Cliff A	4" x 5"	4" x 5"
Cliff B	6" x 7"	8" x 10"
Cliff C	5" x 8"	6" x 10"
Waterfall	3" x 7"	4" x 9"
Mist	6" x 3"	8" x 4"
Cliff D	6" x 5"	7" x 6"
Cliff E	6" x 4"	7" x 5"
Trees A	9" x 6"	12" x 8"
Meadow	9" x 3"	12" x 3"
Trees B	4" square	6" square
Inner Border	1/8 yard	1/8 yard
Outer Border	1/8 yard	1/4 yard

Bella Vista – Mini Landscapes

Supply list (7 pages)

Instructor: Helene Knott 503-888-9784 Email: helene.m.knott@gmail.com

Website: www.heleneknott.com

Bella Vista – Crown Point



Center Panel	7" x 10"	10" x 14"
Muslin	11" x 8"	16" x 11"
Sky	11" x 5"	16" x 6"
Mountain	7" x 4"	9" x 5"
Hill A	6" x 4"	8" x 5"
Water A	4" x 3"	4" x 3"
Hill B	5" x 3"	7" x 4"
Rock A	2" x 2"	4" x 4"
Water B	4" x 3"	5" x 3"
Hill C	7" x 7"	10" x 6"
Water C	9" x 4"	11" x 4"
Hill D	9" x 7"	12" x 9"
Hill E	4" x 4"	5" x 5"
Water D	8" x 4"	10" x 5"
Shore	6" x 3"	7" x 4"
Vista House	4" x 4"	5" x 5"
Cliff	4" x 5"	5" x 6"
Background Trees A	7" x 5"	9" x 6"
Foreground Trees B	7" x 6"	9" x 7"
Tree C	4" x 5"	5" x 7"
Inner Border	1/8 yard	1/8 yard
Outer Border	1/8 yard	1/4 yard