

LAURASTAR



www.laurastar.com

LAURASTAR GO

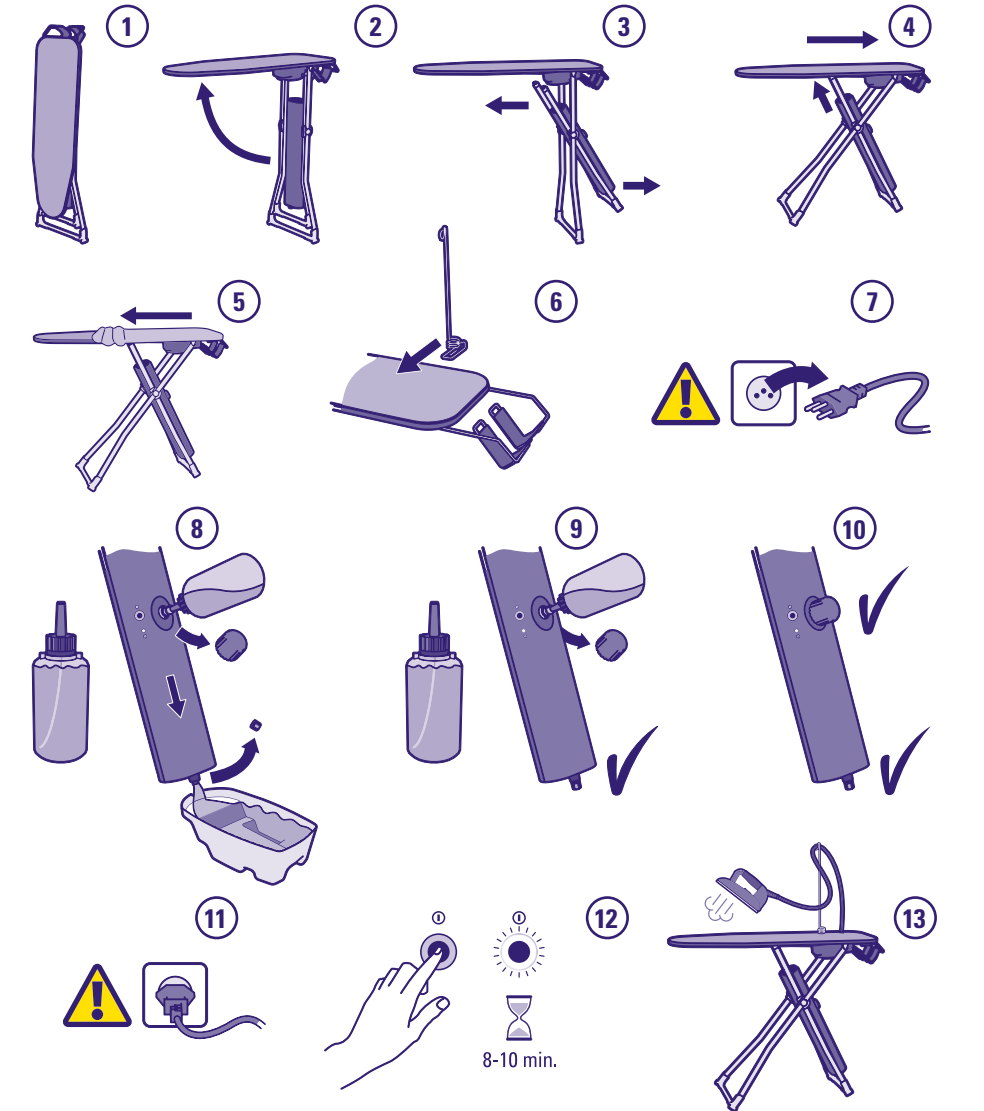
INSTRUCTION MANUAL AND SAFETY INSTRUCTIONS
MODE D'EMPLOI ET INSTRUCTIONS DE SÉCURITÉ
BEDIENUNGSANLEITUNG UND SICHERHEITSHINWEISE
GEBRUIKSAANWIJZING EN VEILIGHEIDSVOORSCHRIFTEN
MANUALE D'USO E ISTRUZIONI DI SICUREZZA
INSTRUCCIONES DE USO E INDICACIONES DE SEGURIDAD
MANUAL DE USO E INSTRUÇÕES DE SEGURANÇA
Kullanım ve Güvenlik Talimatları
РУКОВОДСТВО ПО ЭКСПЛУАТАЦИИ
И МЕРЫ ПРЕДОСТОРОЖНОСТИ
사용 설명서 및 안전 사항
كتيب طريقة الاستعمال وإرشادات السلامة

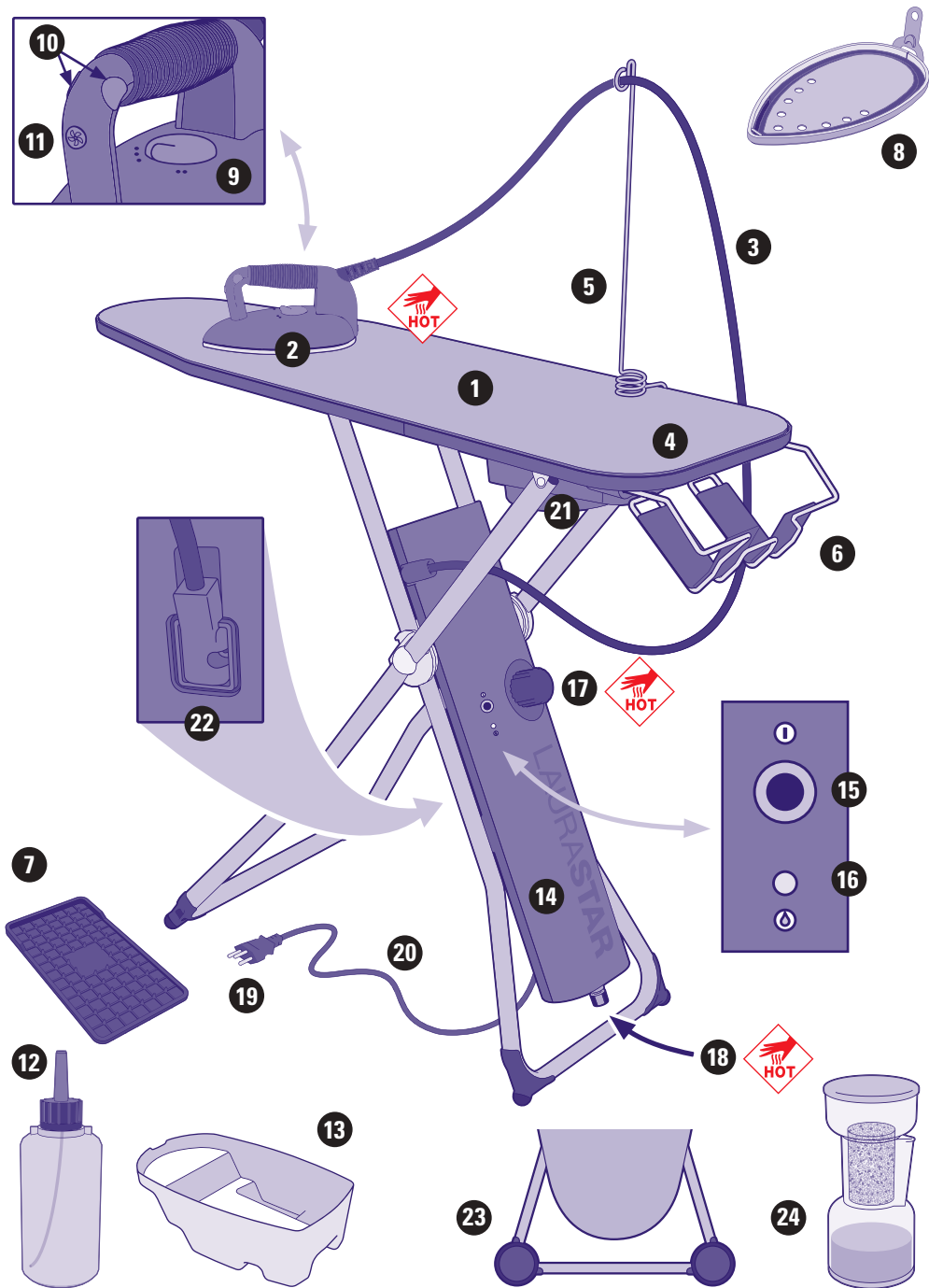
Quick start guide - Mise en marche rapide - Kurzanleitung - Snelle ingebruikname -
Messa in funzione rapida - Puesta en marcha rápida - Iniciação rápida - Pratik
Kullanım Kılavuzu - КРАТКАЯ ИНСТРУКЦИЯ ДЛЯ НАЧАЛА РАБОТЫ - 빠르게 시작하기 - تشغيل سريع



IMPORTANT: Read this entire Instruction Manual carefully before you use the appliance and save it for future reference.

IMPORTANTE: Leia atentamente este Manual de Instruções antes de utilizar o aparelho e guarde-o para consultas posteriores.





Congratulations! You have just purchased a high-quality Laurastar ironing system that combines Swiss design and technology. Please read this Instruction Manual and the safety instructions carefully before using your appliance for the first time, and retain this Instruction Manual for future use.



WARNING: Your Laurastar™ product generates heat and steam. Various parts of the appliance may become very hot during operation and can cause burns.



NOTE: This appliance generates heat and can cause burns. Those parts which get very hot are marked with this symbol.

Overview and features

1. Ironing board
2. Iron
3. Steam hose
4. Special Laurastar cover
5. Cable holder
6. Iron basket
7. Insulating mat
8. Protective soleplate
9. Thermostat
10. "STEAM" button
11. "VACUUM/BLOWER" button
12. Filling bottle
13. Drain tray
14. Steam generator
15. On/Off switch with indicator light
16. Low water level indicator light
17. Filling cap
18. Drain cap
19. Plug
20. Electric cable
21. Fan
22. Fan plug
23. Wheels (LAURASTAR GO + model)
24. Anti-scale water filter (LAURASTAR GO + model)

Table of Contents

| | |
|---------------------------------------------------------------|----|
| Safety instructions | 2 |
| Installation and storage | 3 |
| Start up | 4 |
| Ironing | 5 |
| Filling | 7 |
| Maintenance | 8 |
| Customer service | 10 |
| Problems and solutions | 11 |
| Technical information | 12 |
| Guarantee / Limited Warranty for the United States and Canada | 13 |



WARNING: Failure to comply with this Instruction Manual and the safety instructions may result in serious injury or damage to property. The manufacturer accepts no responsibility for such injury or damage in the event that these safety instructions are not followed. Keep this instruction manual for reference by any and all persons who may use the appliance.

SAFETY INSTRUCTIONS

- **READ THE ENTIRE INSTRUCTION MANUAL BEFORE USING THE APPLIANCE.**
- This appliance is intended for private household use only.
- **Only use this appliance indoors and for ironing textile items in accordance with this Instruction Manual.**
- In an emergency, immediately unplug the plug from the wall socket.
- Unplug the plug from the wall socket outlet after each use. Don't let the plug connected to the wall socket outlet while the appliance is not used.

DANGER!

- Never immerse any part of the appliance in water or any other liquids.
- The appliance must ONLY be connected to a grounded wall socket outlet. We recommend FI circuit breakers. NEVER use a portable socket outlet, a multi-way adaptor or any other extension device. The plug must be easily accessible in case of emergency.
- The iron soleplate and steam jet are very hot. DO NOT iron or apply steam to clothing while it is being worn.
- Do not point vertical steam in the direction of people or pets.
- This appliance produces heat. Keep your hands and body away from the iron soleplate and steam jet while in use – they will be HOT. Contact with hot metal parts, hot water or steam may cause burns. Take care when returning the fabric iron to the iron basket.
- CONTACT WITH PRESSURIZED STEAM CAN CAUSE SEVERE BURNS.
- DO NOT open the filling cap or the drain cap while operating the appliance.
- Unscrew the filling cap and the drain cap with caution - hot pressurized steam will begin to escape after a few turns.
- Step back from the appliance when unscrewing and removing the filling cap or the drain cap - hot steam will escape.

WARNING!

- Never leave the appliance unattended while switched on.
- The iron should always be turned to **off** before plugging into or unplugging from the wall outlet. **always** allow the appliance to cool down for at least 2 hours before emptying and storing.
- **Keep out of reach of children.**
- This appliance is **not** intended for use by children, or persons with reduced physical, sensory or mental capacity, or lack of experience, unless they are supervised by a person responsible for their safety. This appliance is **not** intended to be used by children under the age of 8 regardless of supervision or training.



Keep out of reach of children. Children must be supervised to ensure that they do not play with the appliance.

- Always place the iron on a flat, stable and fire-resistant surface. NEVER rest the iron on the ironing board, ironing board cover, or clothes. To avoid risk of fire, ensure that the iron is placed only in the iron basket.



- Before switching on the appliance, ensure the iron is in the iron basket.
- Allow the iron to cool completely before storing the basket under the ironing board.
- Watch fingers and small children closely when storing your system - the system will automatically close from the weight of the steam generator.
- Take care when removing and setting down the protective soleplate after use. Place the hot soleplate in the heat-resistant iron basket.
- Cleaning, repairs, and maintenance on the appliance should ONLY be performed when the iron is switched off, cold, and allowed to cool down for at least 2 hours. Unscrew the cap with care: any pressurized steam present will begin to escape after a few turns, posing a risk of burns.
- **Do not allow the electrical cable to come into contact with hot surfaces. Allow the iron to cool down completely before storing.**

NOT DRINKING WATER.

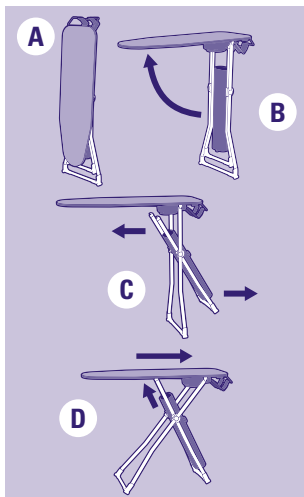
DO NOT drink filtered water. Keep out of reach of children. DO NOT ingest the demineralization granules. They may be disposed of with household waste.

CAUTION!

- Before ironing the garment/fabric, follow the instructions shown on the label.
- Extremely delicate fabrics (including mohair, cashmere, velvet and angora) may be damaged if contact is made with the hot protective soleplate. Iron the fabric (with soleplate attached) at a distance while diffusing steam.
- **Do not use the appliance if it has been damaged in a fall, shows visible signs of damage, or has a faulty steam hose or electric cable. Contact an authorized Laurastar Customer Service representative for information on repair. Incorrect reassembly can cause a risk of electric shock when the appliance is used.**
- DO NOT operate the appliance without water.
- Clean the exterior of the appliance with a soft, damp cloth. DO NOT use solvents, oil or petrol.
- To avoid overloading your electrical installation, do not operate another high-powered appliance (Watts) simultaneously.
- **Never open the drain cap or filling cap during operation. When the appliance is completely cooled, carefully unscrew the drain cap/filling cap: any pressurized steam present will begin to escape after a few turns, posing a risk of burns.**
- DO NOT attempt to insert objects into the openings of the appliance. If water or a foreign body enters the appliance, immediately unplug the iron from the wall socket. Contact an authorized Laurastar Customer Service representative for information on repair.
- To avoid risk of electric shock, DO NOT pull the electric cable from the wall socket – take a firm hold of the plug and remove it.
- Position the electric cable and the steam hose so that they cannot be pulled or caught to avoid a tripping hazard.
- **Environmental information and waste disposal measures:** keep the box in which your appliance was packed in a safe place for future use (transport, servicing, etc.). DO NOT dispose of the used appliance with normal household waste! Ask your municipal or local authorities about appropriate environmentally-friendly disposal facilities

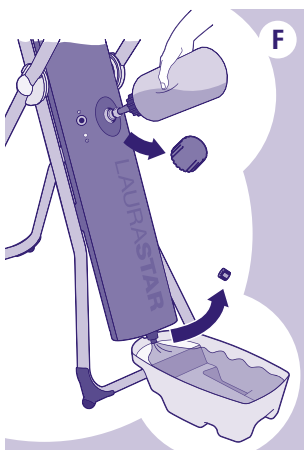
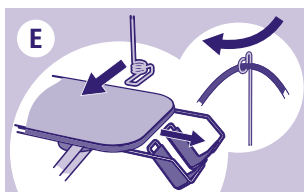
SAVE THESE INSTRUCTIONS CAREFULLY.

Installation and storage



Installing your ironing system

- Remove the appliance from the box and position it vertically on the ground in a closed position. **(A)**
- Grasp the board (1) with one hand on the side of the iron basket (6).
- With the other hand, open the board and hold it in a horizontal position to ensure that the iron does not fall. **(B)**
- Open the foot to which the steam generator is attached (14) and slide it into one of the 3 grooves located under the table (3 possible heights). Check the appliance's stability. **(C) (D)**
- Fit the ironing board cover (4), securing it from the side of the iron basket to the tip of the ironing board, then adjust. The cover supplied with this product is specially designed to ensure uniform distribution of air over the whole board in vacuum or blower mode. Use only a Laurastar approved cover to ensure that its effectiveness is not impaired. The cover is washable at 30°C (warm water); do not spin dry.
- Slide the iron basket (6) outwards to release the iron (2).
- Fix the cable holder (5) onto the ironing board and slide the steam hose into it (3). **(E)**



Preparing the appliance

We recommend that you rinse out the steam generator's water reservoir before using for the first time, to remove any production residue.

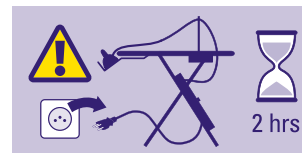
- Check that the plug (19) is disconnected from the outlet.
- Set the ironing board to its highest position.
- Place the drain tray (13) beneath the drain cap (18).
- First unscrew the filling cap (17) then the drain cap (18).
- Fill the bottle (12) supplied with hot tap water and pass its contents through the steam generator to rinse it. Briefly squeeze the bottle to start the water flowing. **(F)**
- After draining all the water, screw the 2 caps back on again. Discard the water.



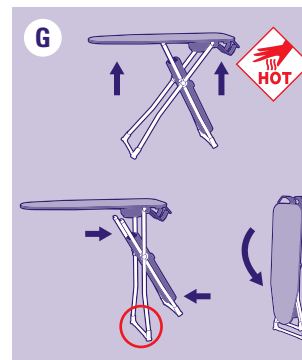
Which water should be used?

Your Laurastar has been designed for use with tap water. However, we recommend using the anti-scale water filter (24) in order to extend the service life of your Laurastar.

NOTICE: Never use additives (e.g. perfumed water), water containing chemical products or water from tumble dryers as these products will have a detrimental effect on the function of your Laurastar.



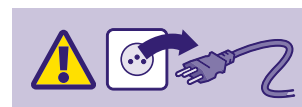
DANGER ! Keep out of reach of children. DO NOT DRINK the filtered water.



Storing your system

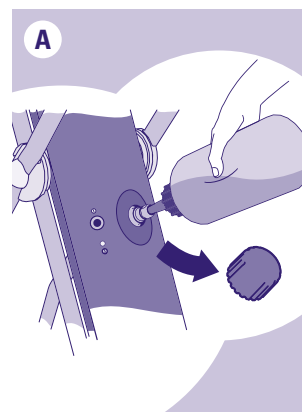
- Switch off the appliance by pressing the On/Off switch (15). Disconnect the plug (19) from the outlet and remove the cable holder (5).
- **WARNING ! Leave the appliance to cool for at least 2 hours before storing in the basket.**
- Place the iron in the basket (6). Slide the basket under the ironing board.
- Lift the ironing board horizontally, holding it by both ends. The weight of the steam generator will close the ironing system; if necessary use the foot to help. Close the board vertically. **(G)**
- You can leave water in your system until the appliance is next used.

Start up



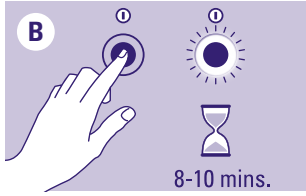
CAUTION: ALWAYS fill the steam generator's water reservoir completely before turning on your Laurastar. Operating the appliance without water could damage the appliance.

PLEASE NOTE: Operating the appliance without water will void any limited warranties provided with your appliance.



Cold filling

- Check that the plug is disconnected from the outlet.
- Set the ironing board to its highest position.
- Fill the bottle supplied with water (12). It has an anti-overfill device which stops the flow when the reservoir is full (the capacity of the bottle is greater than that of the reservoir).
- Unscrew the filling cap (17) and place the nozzle of the bottle in the hole. Squeeze the bottle briefly to start filling the reservoir. Once full, carefully screw the filling cap back on again. **(A)**

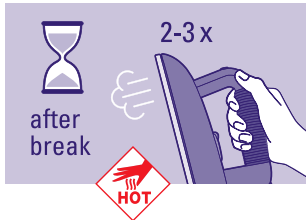


Switching on your appliance

- Insert the plug in the socket.
- Press the On/Off switch(15), the blue indicator light will flash for 8 to 10 minutes. (B)
- When the blue indicator light stops flashing and remains on, the appliance is ready. You can start ironing.



NOTE: For your comfort and safety, your Laurastar system will switch off after 10 minutes of non-use.



NOTE: Before ironing, or after an extended break, press the iron's steam button 2 or 3 times, while pointing it away from the clothes. This will release any condensation from the iron and prevent water marks on the clothes.

CAUTION: Do not point the iron at people or pets while using vertical steam.



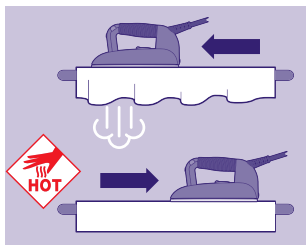
Ironing

Setting the temperature of the iron

Set the thermostat (9) to •• or ••••. (A)

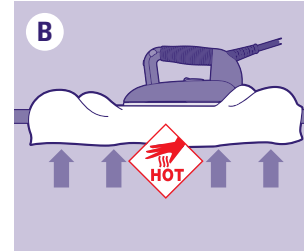
NOTE: After changing the temperature setting, it takes approximately 2 minutes before the new temperature is stabilized.

| Setting the temperature and using the soleplate | Indication on the clothing | Iron setting | Protective soleplate | Material |
|-------------------------------------------------|----------------------------|--------------|----------------------|-------------------------------------------------------------------------------------------------------------------------------------------------------------------------------------|
| | | •• | with | Extremely delicate man-made fabrics. E.g. synthetic velvet, Alcantara® (synthetic suede), "stretch" sports clothing, microfibre fabrics, polyamide/polyester, viscose, polyurethane |
| | | ••• | with | Wool, silk, synthetic fabrics |
| | | •••• | without | Cotton, linen, aramide |



Steam principle

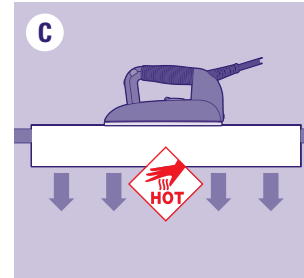
Perfect ironing requires diffusion of steam across the fabric, in order to relax the fibres, and drying to fix them in place. Creases can only be completely removed if these conditions are present. For best results, first iron the item with steam and then iron it again without steam, thereby enabling the iron to dry the fabric.



Two ironing modes

For the best possible steam ironing result, we offer two modes of ironing:

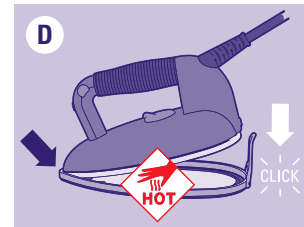
- Press the STEAM button(10) to generate steam and activate the fan in blower mode.
- **Blower mode:** this blows air onto the fabric from below, helping to reduce unwanted creases. (B)
- **Vacuum mode:** this draws in air, holding the garment in place on the board to facilitate perfect pleats. (C)
- Press the VACUUM/BLOWER button(11) to switch from blower to vacuum mode and vice versa.



Advice: to improve the quality of ironing and increase the autonomy of your appliance, iron the fabric once using steam, then a second time without steam to dry the fabric.

Protective soleplate(8)

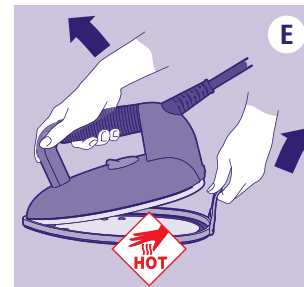
| Ironing mode | Fabric type | | | | | | | Velvet |
|--------------|--------------------|---------------------|---------------------|-----------------------------|----------------|---|---|--------|
| | Blowing | Back | Darts | Inside and linings, sleeves | Top and pleats | • | • | • |
| Vacuum | Buttons and collar | Turn-ups and pleats | Buttons and collars | Pleats | | • | | |



The protective soleplate is indispensable for dark-coloured fabrics which can become shiny and for synthetic fabrics which have a tendency to stick to the iron.

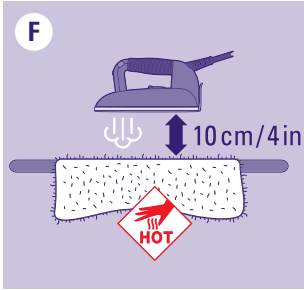
Using the protective soleplate:

- First place the tip of the iron(2) at the front of the protective soleplate(8) and lower the iron to fix it in place in the soleplate. (D)
- Wait approximately 2 minutes for the soleplate to reach the correct temperature.
- To remove the protective soleplate(8), pull on the tab and remove the iron while it is still hot. (E)



WARNING: The protective soleplate and the iron are hot! Use caution when you remove the protective soleplate.

NOTICE: ALWAYS remove the protective soleplate after use.



Advice

For mohair, cashmere, velvet, angora: do not allow the fabric to come into contact with the protective soleplate(8). Iron the fabric at a distance of approximately 10 cm / 4 in while diffusing steam, so that the fabric does not become felted. Then take the item of clothing in your hand and shake it to restore its volume. (F)

For velvet, corduroy and jersey, we recommend steaming without the protective soleplate(8) at around 2-3 cm / 1-2 in from the fabric, then levelling out by hand.



Vertical smoothing out

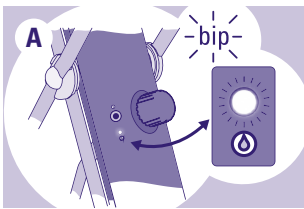
Suspend the item of clothing on a hanger. Moving the appliance from top to bottom, lightly touch the fabric using short bursts of steam. Note: almost all fabrics smooth out easily, with the exception of cotton, linen and certain silks. If a fabric is difficult to smooth out, place it on the ironing board and iron it normally. (G)

WARNING: Do not iron or vertical steam clothes that are being worn. Do not point vertical steam in the direction of people or pets.

Filling



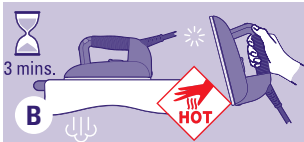
DANGER: this appliance produces **PRESSURIZED STEAM**. Contact with pressurized steam can cause serious burns. **SWITCH OFF** and **UNPLUG** the appliance before filling or draining the iron. **Switch off and unplug the appliance when not in use.**



Low water indicator light (16) and audible alarm

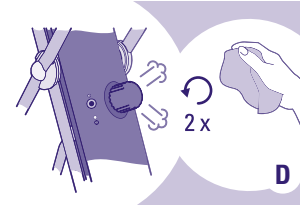
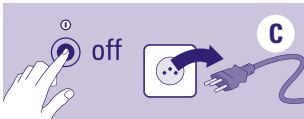
A warning tone sounds and the low water indicator light(16) flashes to signal that there is no water left in the steam generator's reservoir. (A)

When the alarm sounds, you have 3 minutes before the system switches off automatically. However, there is enough steam to finish the garment you are in the middle of ironing.



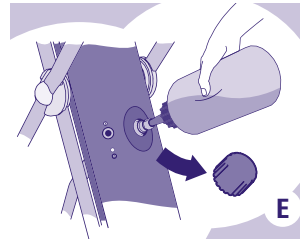
Filling the steam generator

- Press the **STEAM** button(10) and hold down until any residual steam has been fully released. (B)
- **SWITCH OFF** the appliance and **DISCONNECT** the plug(19) from the outlet. (C)



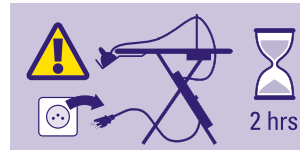
- **SLOWLY** unscrew the filling cap(17) (using a cloth to avoid any direct contact with the steam) until you hear or see the steam escaping - about 2 turns - and wait until steam has been fully released. (D)

DANGER: Contact with pressurized steam can cause serious burns. Step back from the appliance when unscrewing and removing the filling cap. Pressurized steam will escape.



- Unscrew the cap fully and remove. Fill the bottle supplied(12) with water and place the nozzle of the bottle in the opening in the steam generator. Squeeze the bottle briefly. Once full, carefully screw the filling cap back on(17). (E)
- To continue ironing, plug in and switch on your appliance again.

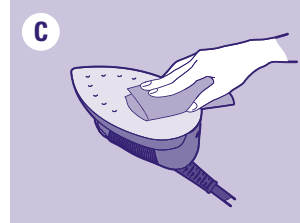
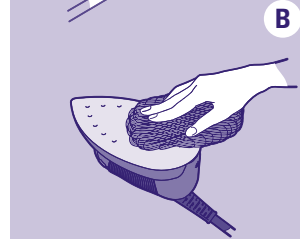
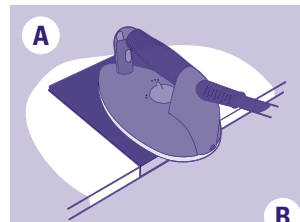
Maintenance



To prolong the life of your appliance, we recommend that you clean your iron every month or after every 10 hours of ironing.

WARNING: the appliance should be **UNPLUGGED, OFF** and **COLD** before cleaning. Switch off and unplug the appliance. Allow your appliance to cool down for at least 2 hours. Always make sure your appliance is cold before cleaning!

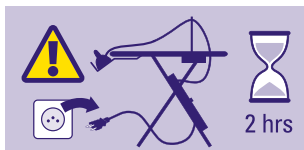
NOTICE! Only rinse the appliance with water. **NEVER** use descaling products or other chemical products.



Cleaning the iron(2)

If the iron's soleplate is dirty, use a Laurastar cleaning mat in accordance with the instructions. Cleaning mats can be obtained at www.laurastar.com or from your approved Laurastar retailer. (A)

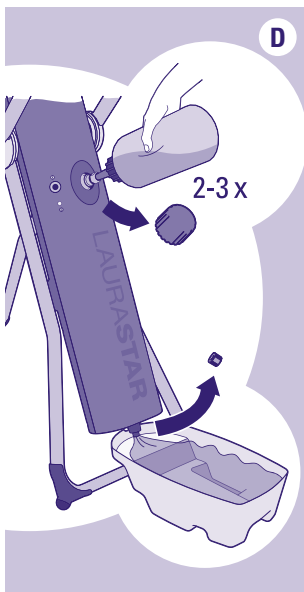
Stubborn stains can be cleaned using an abrasive dishwashing sponge. After completing this operation, remove the aluminium oxide present under the soleplate by cleaning it with a damp cloth. (B)(C)



Rinsing the steam generator (cold iron only)

In order to prolong the effectiveness of your appliance and avoid any traces of limescale, you must rinse the reservoir on a regular basis.

NOTICE: Only rinse the appliance with water. NEVER use descaling products or other chemical products.



Rinse the appliance in accordance with the following instructions:

- Check that the plug (19) is disconnected from the outlet.
- Set the ironing board to its highest position and place the drain tray (13) under the steam generator (14).
- First unscrew the filling cap (17) then the drain cap (18).
- Fill the bottle (12) supplied with hot tap water and pass its contents through the steam generator to rinse it. Briefly squeeze the bottle to start the water flowing. **D**
- Repeat the operation until the water coming out of the steam generator is free of residue. If no water comes out of the drain opening, call the Laurastar Customer Service department.
- Screw the drain cap back on (18). Fill the reservoir with clean water. Screw the filling cap back on (17).

Customer Service

Contact Laurastar

| | Tel. | Fax | E-mail |
|-----------------|------------------|------------------|-----------------------------------------------------------------|
| CH | 0800 55 84 48 | 0840 55 84 49 | ch_serviceclient@laurastar.com ch_kundendienst@laurastar.com |
| UK | 0800 05 65 314 | | ukservice@laurastar.com |
| FR | 0800 918 867 | 0800 911 192 | f_serviceclient@laurastar.com |
| DE | 0800 32 32 400 | 0800 32 32 401 | d_kundendienst@laurastar.com |
| NL | 0800 0228 776 | 0800 0228 772 | nl_klantendienst@laurastar.com |
| BE | 0800 948 38 | 0800 948 39 | be_klantendienst@laurastar.com |
| LU | 0800 48 284 | 0800 48 285 | be_serviceclient@laurastar.com |
| AT | 0800 29 59 53 | 0800 29 62 49 | at_service@laurastar.com |
| IT | 800 795 851 | 800 783 484 | it_servizioclienti@laurastar.com |
| USA | 800 428 28 04 | 541 773 2270 | info@laurastarus.com |
| KR | 031 906 1549 | | laurastar@gatevision.co.kr |
| Other countries | +41 21 948 21 00 | +41 21 948 28 99 | intl_service@laurastar.com |

On our website: www.laurastar.com

There you will find other addresses for importers and official service partners, as well as the complete list of Laurastar accessories.

IMPORTANT: before returning any product to the Customer Service department, please refer to the Problems and Solutions section - page 11.

Problems and solutions

Before calling the Laurastar Customer Service department, please check the following points:

| | Symptom | Likely cause | Remedy |
|-----------------|------------------------------------------------------------|---------------------------------------------------------------------------------------------------------------------------------------------------------------------------------|-------------------------------------------------------------------------------------------------------------------------------------------------------------------------------|
| STEAM GENERATOR | Makes a buzzing noise when steam is emitted from the iron. | Vibration from the appliance. | This noise is normal for a new appliance, it will disappear in the course of use. |
| | Makes a crackling noise when the appliance is switched on. | The appliance has been set to heat up but has not been filled with water. | Fill the steam generator with water – page 4. |
| | The blue indicator light flashes during ironing. | The water has been reheated. | The appliance is working normally. |
| | The iron no longer emits steam. The pressure has fallen. | <ul style="list-style-type: none"> The steam generator is empty. The appliance is switched off. The plug (19) is disconnected from the outlet. | <ul style="list-style-type: none"> Fill the steam generator with water – page 4. Press the appliance's On/Off switch (15). Plug in the iron. |

| | Symptom | Likely cause | Remedy |
|------|----------------------------|----------------------------------------------------------------------------------------------------------------------------------------------------------------------------------------------------------------------------------------------------------|------------------------------------------------------------------------------------------------------------------------------------------------------------------------------------------------------------------------------------------------------------------------------------------------------------------------------------|
| IRON | The soleplate drips. | <ul style="list-style-type: none"> The iron is not ready. The thermostat is incorrectly set. The appliance has not been drained recently. The steam generator has been rinsed with a product other than water. | <ul style="list-style-type: none"> Wait until the blue indicator light on the On/Off switch (15) stops flashing. Adjust the temperature by setting the thermostat (9) – page 5. Rinse the generator (14) until the rinse water is free of residue. Call the Customer Service department. |
| | The iron does not heat up. | <ul style="list-style-type: none"> The plug (19) is disconnected from the outlet. The appliance is switched off. | <ul style="list-style-type: none"> Plug in the iron (19). Switch on the appliance – page 5. |
| | The iron is too hot. | The thermostat is incorrectly set. | Adjust the temperature – page 5 |

| | Symptom | Likely cause | Remedy |
|-----|-------------------------------------------------------------|----------------------------------------------------------|----------------------------------------------------------------------------------------------------------------------------------------------------------------------------------------------------------------------|
| FAN | There is no sound from the fan. | The fan plug (22) is disconnected from the outlet. | Reconnect the fan plug (22) to the outlet. |
| | The tip of the ironing board table becomes wet when folded. | There is condensation inside the ironing board unit (1). | <ul style="list-style-type: none"> Leave the appliance open until the water has completely evaporated. Use less steam. Please refer to instructions for use of the vacuum / blower – page 6. |

Return to the Customer Service department

Switch off the appliance and disconnect the plug from the outlet. Locate your purchase contract, invoice or receipt. Telephone the Customer Service department and follow the instructions given.

Technical information

Technical characteristics

| | CE | UL |
|-------------------------------------------|----------------------|-------------------------------------------|
| Total output | 1800 W | 1600 W |
| Steam pressure | 350 KPa (3.5 bar) | 350 KPa (50 psi/3.5 bar) |
| Steam generator capacity | ~0.8 l | ~27.1 oz. / ~0.8 l |
| Electricity supply | 220-240 VAC/50-60 Hz | 120 VAC/60 Hz |
| Weight of iron | ~1 kg | ~2.2 lbs/~1 kg |
| Appliance weight | ~12.7 kg | ~28 lbs / ~12.7 kg |
| Board height | ~79-95 cm | ~31.1 - 37.4 in / ~79-95 cm |
| Dimensions when folded (H x L x B) | ~130 x 39 x 18 cm | ~51.2 x 15.4 x 7.1 in / ~130 x 39 x 18 cm |

Declaration of CE conformity

In sole responsibility, the manufacturer Laurastar SA, Route de Pra de Plan 18, P.O. Box 320, CH-1618 Châtel-St-Denis (Switzerland), declares that these products comply with the applicable provisions of the Directives:

2014/30/EU, 2014/35/EU, 2009/125/EC. (EC) 1275/2008, 2011/65/EU

EU Directive on the use of certain hazardous substances in electrical and electronic equipment 2011 / 65 / EU



Laurastar international guarantee

The present guarantee does not, in any way, affect the statutory rights of the user pursuant to the national legislation in force governing the sale of consumer goods, including the rights set out by Directive 2011/83/EU of the European Parliament and of the Council of 25 October 2011 on certain aspects of sales and guarantees for consumer goods, or the rights held by the user, by virtue of the sales contract, with regard to the respective vendor. In the event that an appliance sold by Laurastar contains manufacturing defects, Laurastar shall be liable for the complete elimination of these defects within the scope defined below.

1. Scope of cover

This guarantee only applies to products manufactured by or on behalf of Laurastar, which may be identified by the brand, the trade name or the Laurastar logo affixed to the product. The guarantee does not apply to non-Laurastar products, accessories or spare parts.

This guarantee shall be applicable only if the appliance becomes unusable, or if its use is significantly hindered, due to a manufacturing defect, an assembly defect or a defect in the material of the appliance, and if this defect was already in existence when the appliance was supplied to the user.

It shall not be applicable, in particular:

- if the hindrance to use of the appliance is due to professional use of the appliance, namely intensive use for which the user receives monetary remuneration
- to normal wear and tear of the appliance's components and accessories
- to an intervention by a third party or a repairer not approved by Laurastar
- to failure to comply with the instructions contained in the Instruction Manual, specifically the warnings concerning start-up, use and maintenance of the appliance
- to non-compliant use.

The concept of "non-compliant use" notably includes damage caused by:

- the fall of the appliance or of a component
- blows or marks resulting from negligence
- keeping the protective soleplate on the iron permanently
- failure to rinse the boiler
- use of water that does not comply with the specifications
- use of non-Laurastar products, accessories and spare parts.
- the plug connected to the wall socket outlet permanently.

2. Entitlements held by the user

When a user asserts, in a manner compliant with the present guarantee, an entitlement arising from the said guarantee, Laurastar shall be free to implement the most appropriate method for eliminating the defect. This guarantee does not grant the user any entitlement or any additional right;

in particular, the user may not claim for reimbursement of expenses in relation to the defect, or compensation for any consequential loss or damage. Moreover, transportation of the appliance from the user's place of residence to Laurastar's premises, and return transportation, shall be carried out at the user's risk.

3. Term of validity

This guarantee is only valid for the entitlements that it accords to the user and that the user has asserted against Laurastar within the guarantee term.

The guarantee term is one year for countries that are not members of the European Union and two years for European Union Member States and Switzerland, calculated from the date of delivery of the appliance to the user. If defects are notified after the guarantee term has come to an end, or if the documents or items of evidence that are necessary to assert the defects in accordance with the present declaration are not present until after the end of the guarantee term, the user shall not hold any rights or entitlements by virtue of this guarantee.

4. Immediate notification of defects

When the user discovers a defect in the appliance, he/she undertakes to communicate this to Laurastar without delay. If the user does not do so, he / she shall lose the entitlements afforded by the present guarantee.

5. Methods for asserting entitlements arising from the present declaration

In order to assert the entitlements resulting from this guarantee, the user must contact the Laurastar Customer Service department (see page 10), either:

- by telephone
- by e-mail
- by fax.

He/she must follow the instructions from the Customer Service department and send, at his/her own risk:

- the appliance with the defect(s)
- a copy of the purchase contract, of the invoice, of the till receipt or any other suitable document as evidence of the date or place of purchase.

The Customer Service department is available to provide any additional information on this subject.

You will find other addresses for importers and official service partners at www.laurastar.com.

If an appliance is returned to the Laurastar approved service centre when there is no defect present, the user shall be liable for the dispatch and return costs.

6. Laurastar after-sales service

If a Laurastar appliance is entrusted to the approved service centre for work outside the provisions of this guarantee, or after the guarantee term has come to an end, this shall be

deemed a "repair outside guarantee" and shall form the subject of an invoice.

Special clause only applicable in France:

In addition to the contractual guarantee detailed above, customers benefit from the legal guarantee for hidden defects set out in Article 1641 et seq. of the French Civil Code.

7. Special Clause only Applicable in China

The above mentioned guarantee shall not be applicable to any repair, change or return of a defective product occurred in China, unless all the following conditions are satisfied:

1. A customer shall provide reasonable supporting documents, such as formal commercial invoice and warranty card, etc., to prove that the product in question has been purchased from an official channel in China which is directly or indirectly authorized by Laurastar; and
2. A product in question shall be affixed with a China compulsory certification identification.

Laurastar™ limited warranty for USA & Canada

Laurastar warrants its product to be free from defects in materials and workmanship under normal customer use as described in the Instruction Manual for 1 year from the date of purchase as identified on the invoice or cash receipt. This limited warranty extends only to the original purchaser and is not transferable. Laurastar, at its option, will at no charge repair or replace defective equipment during the period of this limited warranty. To obtain warranty service, the damaged equipment must be sent or taken to an authorized Laurastar customer service center. This limited warranty is the customer's exclusive remedy and applies only to new Laurastar products.

This limited warranty does not cover normal wear and tear, wear of the electric cable, wear of the soleplate, or wear of the appliance's components and accessories. Damage caused by improper operation or storage, misuse or abuse, unauthorized repair by non-Laurastar specialists, accident or neglect, alteration, or connecting to a power source outside the specified voltage. Equipment used for a commercial or any other non-domestic or household purpose is not covered by this limited warranty. "Misuse or abuse" of the product includes the use of the equipment for any purpose, or in any manner, not in accordance with the instructions contained in the Instruction Manual provided with the equipment. Examples of "misuse or abuse" of the product include, but are not limited to, damage caused by the appliance or one of its components falling to the floor, failure to rinse the water reservoir, failure to remove the protective soleplate, use of any liquid other than water, failure to unplug the plug from the wall socket outlet after use and use of non-Laurastar products, accessories, and spare parts. Damage caused by any failure to follow the instructions contained in the Instruction Manual is not covered by this limited warranty.

ANY IMPLIED WARRANTIES, INCLUDING WITHOUT LIMITATION THE IMPLIED WARRANTIES OF MERCHANTABILITY AND FITNESS FOR A PARTICULAR

8. Special Clause only Applicable in the Republic of Korea

The above mentioned guarantee shall not be applicable to any repair, change or return of a defective product occurred in the Republic of Korea, unless all the following conditions are satisfied:

1. A customer shall provide reasonable supporting documents, such as formal commercial invoice and warranty card, etc., to prove that the product in question has been purchased from an official channel in the Republic of Korea which is directly or indirectly authorized by Laurastar; and
2. A product in question shall be affixed with a Republic of Korea compulsory certification identification.

The exclusion of the Republic of Korea from the International Warranty is valid from June 2017.

PURPOSE, SHALL BE LIMITED TO THE DURATION OF THIS LIMITED WARRANTY. LAURASTAR SHALL UNDER NO CIRCUMSTANCES BE LIABLE FOR DAMAGES IN EXCESS OF THE PURCHASE PRICE OF THE PRODUCT OR FOR ANY INCIDENTAL OR CONSEQUENTIAL DAMAGES OF ANY KIND ARISING OUT OF THE CUSTOMER'S ABILITY OR INABILITY TO USE THE PRODUCT.

Some states and jurisdictions do not allow the limitation or exclusion of incidental or consequential damages, or limitation on the length of an implied warranty, so the above limitations or exclusions may not apply to you. This limited warranty gives the customer specific legal rights, and you may have other rights that vary from state to state.

LAURASTAR™ AFTER-SALES SERVICE

If you have a claim under this Limited Warranty, please contact the Laurastar Customer Service department (see page 10), either by telephone, e-mail or fax. You must follow the instructions from the Customer Service department and send, at your own risk:

- the appliance;
- a copy of the purchase contract, invoice, till receipt, or any additional information on this subject.
You will find other addresses for importers and official service partners at www.laurastar.com.

If an appliance is returned to the Laurastar approved service center when there is no defect present, the user shall be liable for the dispatch and return costs

If a Laurastar appliance is entrusted to the approved service center for work outside the provisions of this Limited Warranty, or after the Limited Warranty one-year term has come to an end, this shall be deemed a "repair outside limited warranty" and shall form the subject of an invoice.